






10 Brulu Close Mount Eliza VIC

4  3  2 

This immaculately presented 40 square home sits against a parkland backdrop in landscaped surrounds, with sumptuous views and Bay glimpses, with a huge north facing alfresco space.

Comprising 4 bedrooms, study, separate lounge, separate dining with a large rumpus room and family room - this family home can provide accommodation for a significant household.

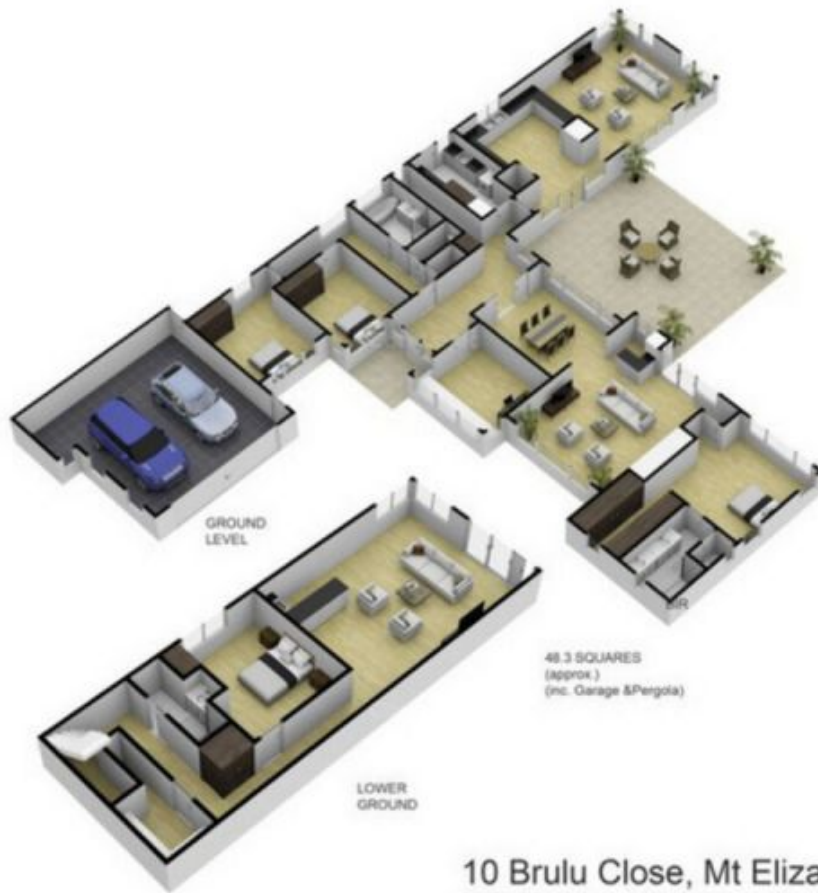
A separate entry flows onto a large dining area through to a stylish lounge with fireplace and a sizable main bedroom with ensuite and WIR. The kitchen is equipped with quality appliances and a 2 drawer dishwasher. Spacious laundry with ample storage area at entry level with a further bedroom, powder room and large rumpus room on the lower level with lots of storage space including large under stair area.

A quality home in a first-class location close to Mt Eliza

Price : \$ 1,800,000
Building Size : 40 Sqrs
Land Size : 2493 sqm
View : <https://www.tjsparks.com.au/sale/vic/bay-side/mount-eliza/residential/house/7790546>



Terry Sparks
0419586836



10 Brulu Close, Mt Eliza

Site Plan & Boundaries are for illustrative purposes only, not to scale
Fixtures & Fittings are for display purposes only, not to scale
Produced by Open2view.com

Oct 18





10 Brulu Close, Mt Eliza

Site Plan & Boundaries are for illustrative purposes only, not to scale
 Fixtures & Fittings are for display purposes only, not to scale
 Produced by Open2view.com

